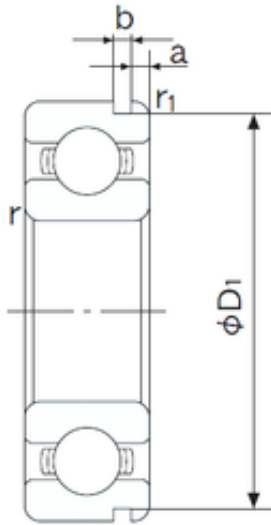




# NTN Machinery Manufacturing Co., Ltd



40 mm x 80 mm x 18 mm NACHI 6208N deep groove ball bearings

Bearing No. 6208N

6208N Bearing 2D drawings and 3D CAD models

Size	40x80x18 mm
Bore Diameter	40 mm
Outer Diameter	80 mm
Width	18 mm
d	40 mm
D	80 mm
B	18 mm
C	18 mm
a	3.28 mm
b	1.9 mm
r min.	1.1 mm
r1 min.	0.5 mm
D1	76.81 mm
Weight	0.366 Kg
Basic dynamic load rating (C)	29,1 kN
Basic static load rating (C0)	17,9 kN
(Grease) Lubrication Speed	8200 r/min
Bore Type	Cylindrical Bore
Enclosure	Open
Configuration	Single Row
Bore Size	40 mm
Outside Diameter	80 mm
Width	18 mm
Fillet Radius/Chamfer	1.1 mm
r1	0.5 mm



## NTN Machinery Manufacturing Co., Ltd

Groove Width	1.9 mm
Groove Diameter	76.8 mm
a (max)	3.3 mm
Dynamic Load Rating	29,100 N
Static Load Rating	17,900 N
Limiting Speed - Grease	8,700 rpm
Limiting Speed - Oil	10,000 rpm
Factor fo	14.0
Radial Clearance	0.006 to 0.020 mm
da (min)	47 mm
Da (max)	73 mm
Dx (min)	88 mm
ra (max)	1 mm
Cy (max)	4.6 mm